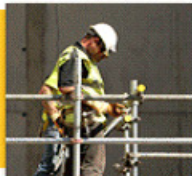




MURRAY • CALLOWAY COUNTY • KENTUCKY  
ECONOMIC DEVELOPMENT CORPORATION



work.



play.



live.

# AVAILABLE BUILDING MURRAY, KENTUCKY



- **24,410 SQ. FT**
- **800 SQ. FT. OFFICE**
- **FULL HVAC**
- **480 VOLT 1200 AMP ELECTRICAL**
- **6" REINFORCED CONCRETE FLOORING**
- **2 EXTERIOR DOCK DOORS**
- **1 DRIVE IN DOOR**
- **WET SPRINKLER SYSTEM**
- **15'6" UNDER BEAM AT THE EAVES**
- **21' UNDER BEAM AT THE CENTER**
- **EXCELLENT CONDITION—BUILT IN 2000**
- **PARKING FOR 60+ CARS**
- **ADDITIONAL PARKING FOR TRUCKS**



**MARK MANNING**

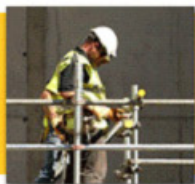
**270-762-3789**

**MARKMANNING@MURRAY-KY.NET**

**WWW.THINKMURRAY.COM**



MURRAY • CALLOWAY COUNTY • KENTUCKY  
ECONOMIC DEVELOPMENT CORPORATION



work.

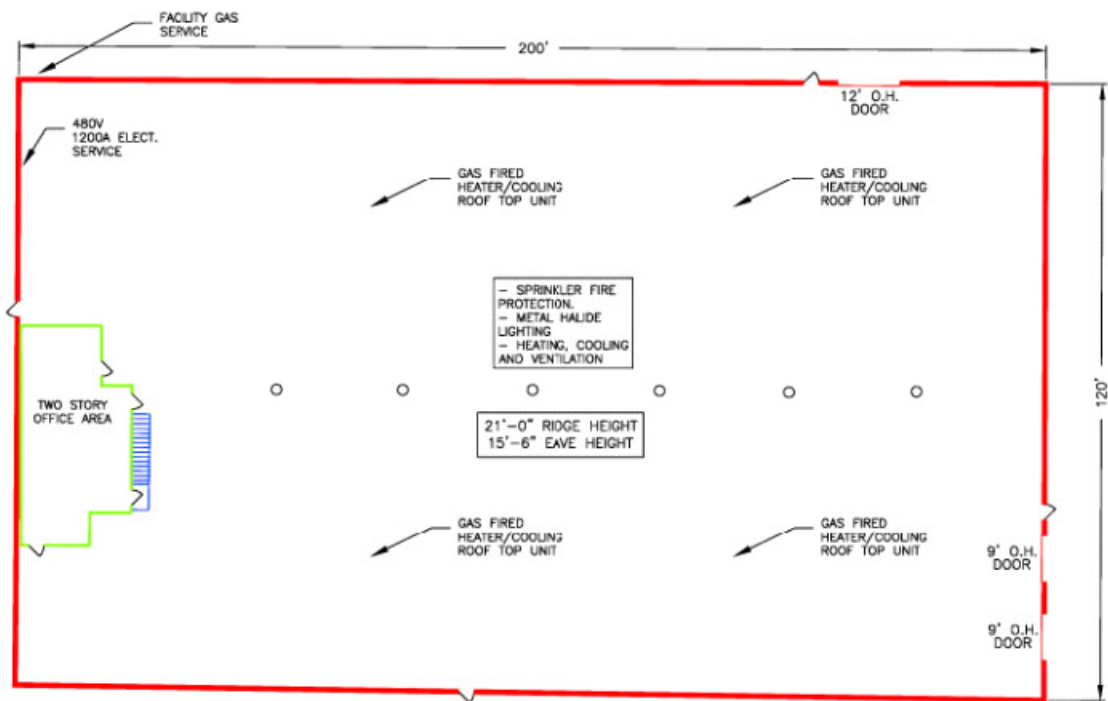


play.



live.

# JAKEL FLOOR PLAN



# JAKEL SITE PLAN

